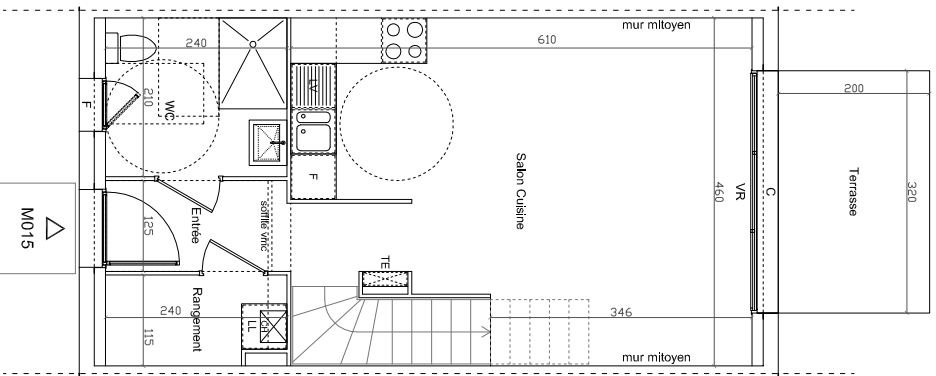


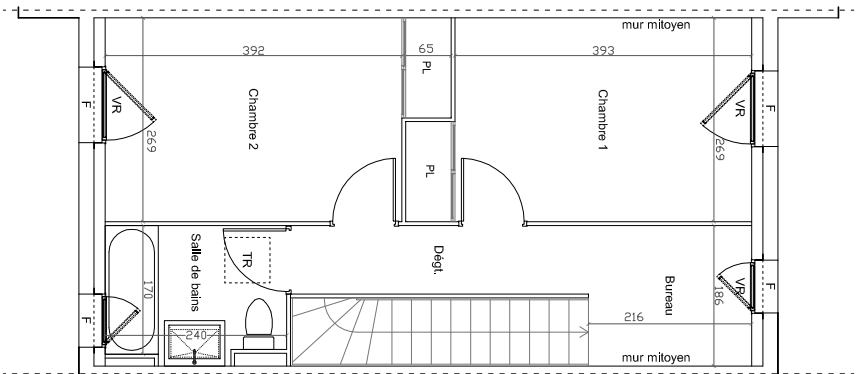


# Les Villas Gabriel

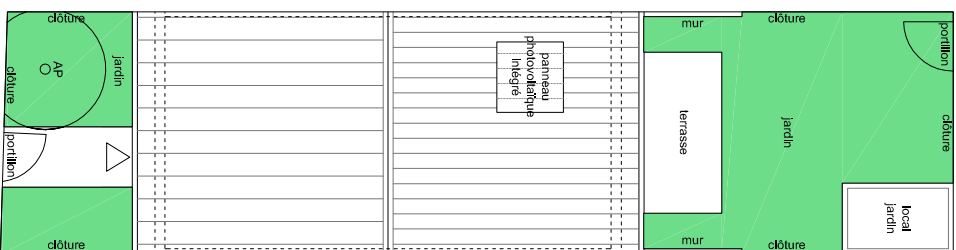
## rue Gabriel Moussa 33320 Eysines



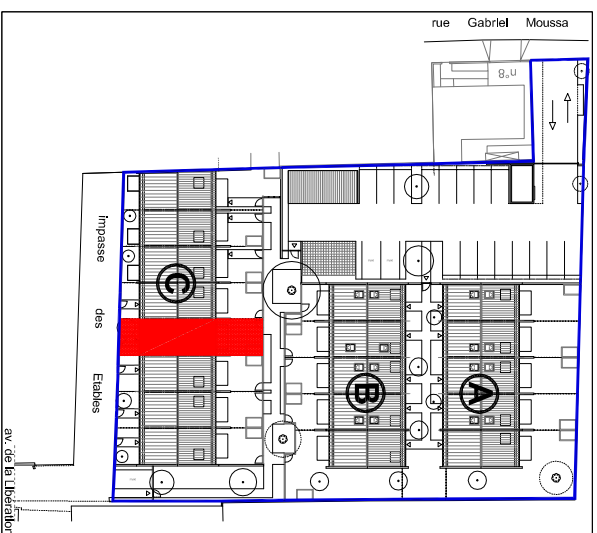
Plan RDC



Plan R+1



Plan masse



MAISON T3 M015 - BATIMENT C

- Entrée 2.92 m<sup>2</sup>
- Rangement (Rgt) 2.74 m<sup>2</sup>
- WC 5.04 m<sup>2</sup>
- Salon Cuisine 25.17 m<sup>2</sup>
- Chambre 1 + Pl. 11.42 m<sup>2</sup>
- Chambre 2 + Pl. 11.42 m<sup>2</sup>
- Bureau 4.00 m<sup>2</sup>
- Dégagement (Dég) 3.57 m<sup>2</sup>
- Salle de bains 4.18 m<sup>2</sup>

SURFACE HABITABLE	70.46 m <sup>2</sup>
SURFACE UTILE	70.46 m <sup>2</sup>
Terrasses	6.40 m <sup>2</sup>
Local Vélos	2.70 m <sup>2</sup>
Jardin (espace vert)	36.04 m <sup>2</sup>

